



產品簡介

- ◆外螺紋缸體可以使你很方便地將油缸直接安裝在工裝夾具的平板上，此系列有單動式和復動式兩種。
- ◆往復式特點：夾緊與鬆卸完全靠油路控制，按照換向閥的方向交替來控制轉角缸的夾緊與鬆卸過程。
- ◆單動式特點：內部系統化比較簡單，沒有卸載系統，卸載時靠彈簧回力完成鬆卸行程；外部管路的閥門及附件較少使配套系統比較簡單。單動式可以空載回程。
- ◆缸體材質合用碳鋼，經滲碳氮化處理，表面硬度高，缸體內面硬度高耐磨損。
- ◆壓板需增加長度時，請勿大于原長度之1.5倍。

Introduction of product

- ◆Threaded body can help you to use the screw of cylinder body and locknut to fix swing clamp on fixture plate. It has single and double acting type.
- ◆Feature of the doubling acting type: Oil circuits control clamping and unclamping, you can control the clamping and unclamping by changing the direction valve.
- ◆Feature of the single acting type: The design of the interior system is simple. It is not necessary to design for unclamping. It can return back to original position by spring and the system design is simple because of few accessories.
- ◆The material of the cylinder body is carbon steel and treated by nitriding. The hardness of the outside and inside surface of the cylinder is high and the cylinder is antiabrasive.
- ◆Please don't exceed 1.5 times of the original length, if you need to increase the length of the clamping arm.

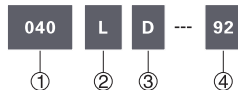
特性資料 Specification 單動系列 Single Acting

油缸類型 Type of cylinder	040LS-22	040LS-52	040LS-92	040LS-121	040LS-202
	040RS-22	040RS-52	040RS-92	040RS-121	040RS-202
油缸內徑 Bore of cylinder(mm)	Φ14	Φ22	Φ32	Φ32	Φ45
垂直行程 Clamping stroke ( mm )	8	10	12	13	14
總行程 Total stroke ( mm )	16.5	22.6	22.1	28.4	27.9
受壓面積拉入 Pressure area pull cm <sup>2</sup>	0.75	1.79	3.13	4.24	7.86
理論夾持力 Theoretical clamping 250kg/cm <sup>2</sup>	173kg	380kg	710kg	970kg	1830kg
使用液體 Fluid	已濾清之標準液壓油 Filtered oil				
使用壓力範圍 Range of pressure(kg/cm <sup>2</sup> )	35~250kg/cm <sup>2</sup>				
轉角角度 Rotating angle	標準角度 Standard angle 90° 特殊角度 Especial angle 30°, 45°, 60° 可定制 Can order				

特性資料 Specification 復動系列 Double Acting

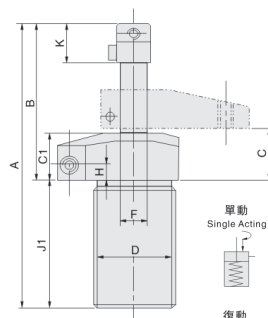
油缸類型 Type of cylinder	040LD-22	040LD-52	040LD-92	040LD-121	040LD-202
	040RD-22	040RD-52	040RD-92	040RD-121	040RD-202
油缸內徑 Bore of cylinder(mm)	Φ14	Φ22	Φ32	Φ32	Φ45
垂直行程 Clamping stroke ( mm )	8	10	12	13	14
總行程 Total stroke ( mm )	16.5	22.6	22.1	28.4	27.9
受壓面積拉入/推出 Pressure area pull/push cm <sup>2</sup>	0.75/1.53	1.79/3.79	3.13/8.03	4.24/8.03	7.86/15.89
理論夾持力 Theoretical clamping 250kg/cm <sup>2</sup>	180kg	445kg	780kg	1060kg	1960kg
使用液體 Fluid	已濾清之標準液壓油 Filtered oil				
使用壓力範圍 Range of pressure(kg/cm <sup>2</sup> )	35~250kg/cm <sup>2</sup>				
轉角角度 Rotating angle	標準角度 Standard angle 90° 特殊角度 Especial angle 30°, 45°, 60° 可定制 Can order				

訂購標示法 Ordering Code

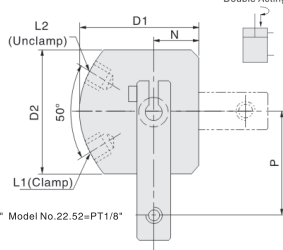
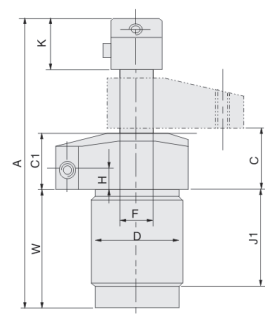


① 系列號 Series	040
② 轉角方向 Rotating direction	右轉R或左轉L Turn right R or Turn left L
③ 作動方式 Acting type	單動式 S:Single acting 復動式 D:Double acting
④ 型號 Type	22,52,92,121,202

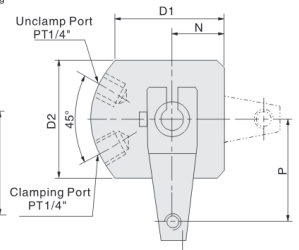
Model No. -22,52,121



Model No. -92,202,



Model No.121+PT1/4 Model No.22.52+PT1/8



## 外形尺寸表 Dimension table 單動式 Single acting

MODEL		單位 (Unit) : mm													
ITEM	A	B	C	C1	D	D1	D2	ΦF	H	J1	K	N	P	W	Weight
040LS-22 040RS-22	112	59	26	25	M28x1.5	39.4	33	10	10	---	16	15.5	25	---	0.5
040LS-52 040RS-52	135	69	27	25	M35x1.5	47.5	38	16	10	---	19	19.1	40	---	1.1
040LS-92 040RS-92	143	80	33	30	M48x1.5	62.5	48	25	13	43	25	23.9	45	63	2.0
040LS-121 040RS-121	171	86	27	25	M48x1.5	60.5	51	22	10	---	30	25.4	50	---	1.6
040LS-202 040RS-202	165	93	35	32	M65x1.5	75.9	65	32	13	55	30	32.5	55	71.9	3.2

## 外形尺寸表 Dimension table 復動式 Double acting

MODEL		單位 (Unit) : mm													
ITEM	A	B	C	C1	D	D1	D2	ΦF	H	J1	K	N	P	W	Weight
040LD-22 040RD-22	112	59	26	25	M28x1.5	39.4	33	10	10	53	16	15.5	25	---	0.5
040LD-52 040RD-52	135	69	27	25	M35x1.5	47.5	38	16	10	66	19	19.1	40	---	1.1
040LD-92 040RD-92	143	80	33	30	M48x1.5	62.5	48	25	13	43	25	23.9	45	63	2.0
040LD-121 040RD-121	171	86	27	25	M48x1.5	60.5	51	22	10	86	30	25.4	50	---	1.6
040LD-202 040RD-202	165	93	35	32	M65x1.5	75.9	65	32	13	55	30	32.5	55	71.9	3.5

## 產品簡介



## Introduction of product

- ◆當空間非常小時, 050系列具備最小的安裝高度, 但須預留孔放置轉角缸; 缸體的主結構可隱藏在工作臺面, 安裝簡單, 祇用三四顆螺絲就能固定; 對稱法蘭設計使轉角缸採用三點或四點螺栓對稱固定. 050分為單動式及復動式兩種.
- ◆往復式特點: 夾緊與鬆卸完全靠油路控制, 按照換向閥的方向交替來控制轉角缸的夾緊與鬆卸過程.
- ◆單動式特點: 內部系統化比較簡單, 沒有卸載系統, 卸載時靠彈簧回力完成鬆卸行程; 外部管路的閥門及附件較少使配套系統比較簡單. 單動式可以空載回程.
- ◆缸體材質採用碳鋼, 經冷噴氮處理, 表面硬度高, 缸體內面硬度高耐磨損.
- ◆壓板需增加長度時, 請勿大於原長度之1.5倍.

- ◆050 series owns smallest height for mounting when space is limited, but it is necessary to manufacture a hole for installing swing clamp on fixture plate and the cylinder body can be inserted into the fixture plate. Installing is very simple. You just need 3 or 4 PCS of bolts to fix your swing clamp cylinder. It has single acting and double acting type.
- ◆Feature of the doubling acting type: Oil circuits control clamping and unclamping, you can control the clamping and unclamping by changing the direction valve.
- ◆Feature of the single acting type: The design of the interior system is simple. It is not necessary to design for unclamping. It can return back to original position by spring and the system design is simple because of few accessories. It can return back to position under free load.
- ◆The material of the cylinder body is carbon steel and treated by nitriding. The hardness of the outside and inside surface of the cylinder is high and the cylinder is anti-abrasive.
- ◆Please don't exceed 1.5 times of the original length, if you need to increase the length of the clamping arm.

## 特性資料 Specification 單動系列 Single Acting

油缸類型 Type of cylinder	050LS-22	050LS-52	050LS-92	050LS-121	050LS-202
	050RS-22	050RS-52	050RS-92	050RS-121	050RS-202
油缸內徑 Bore of cylinder(mm)	Φ14	Φ22	Φ32	Φ32	Φ45
垂直行程 Clamping stroke ( mm )	8.1	9.9	11.9	12.7	14.0
總行程 Total stroke ( mm )	16.5	22.6	22.1	28.4	27.9
受壓面積拉入 Pressure area pull cm <sup>2</sup>	0.75	1.79	3.13	4.24	7.86
理論夾持力 Theoretical clamping 250kg/cm <sup>2</sup>	173kg	380kg	710kg	970kg	1830kg
使用液體 Fluid	已濾清之標準液壓油 Filtered oil				
使用壓力範圍 Range of pressure(kg/cm <sup>2</sup> )	35-250kg/cm <sup>2</sup>				
轉角角度 Rotating angle	標準角度 Standard angle 90° 特殊角度 Especial angle 30°, 45°, 60° 可定制 Can order				

## 特性資料 Specification 復動系列 Double Acting

油缸類型 Type of cylinder	050LD-22	050LD-52	050LD-92	050LD-121	050LD-202
	050RD-22	050RD-52	050RD-92	050RD-121	050RD-202
油缸內徑 Bore of cylinder(mm)	Φ14	Φ22	Φ32	Φ32	Φ45
垂直行程 Clamping stroke ( mm )	8	9.9	11.9	12.7	14.0
總行程 Total stroke ( mm )	16.5	22.6	22.1	28.4	27.9
受壓面積拉入/推出 Pressure area pull/push cm <sup>2</sup>	0.75/1.53	1.79/3.79	3.13/8.03	4.24/8.03	7.86/15.89
理論夾持力 Theoretical clamping 250kg/cm <sup>2</sup>	180kg	445kg	780kg	1060kg	1960kg
使用液體 Fluid	已濾清之標準液壓油 Filtered oil				
使用壓力範圍 Range of pressure(kg/cm <sup>2</sup> )	35-250kg/cm <sup>2</sup>				
轉角角度 Rotating angle	標準角度 Standard angle 90° 特殊角度 Especial angle 30°, 45°, 60° 可定制 Can order				